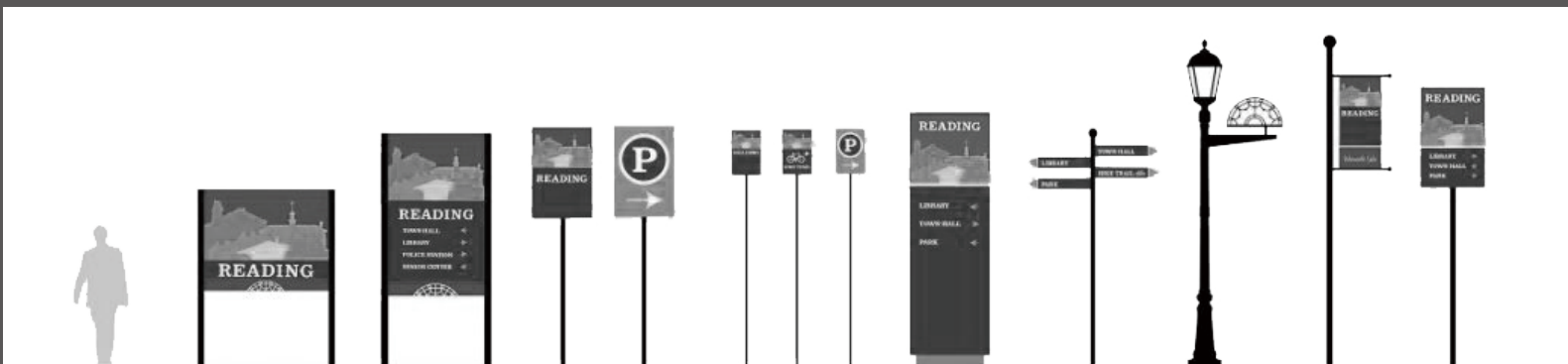


Signage and Wayfinding Systems

Wayfinding signs are crucial for every kind of building – from commercial complexes and hotels to governmental offices, hospitals and more. These signs enable visitors to find their way throughout the building, whether they need reception, the restrooms, or even the elevator banks. Our products are different from the standard signs or the plates in stock, we can customize the text, icons, colors, materials and sizes. Especially for larger custom sign projects, we can provide professional consultation and prompt quotes.



Types Of Wayfinding Signage

DIRECTIONAL SIGNS

Interior or Exterior Signage



Our Directional Sign Systems increase wayfinding clarity for customers and reinforce identity and image throughout a facility.

DIRECTORY SIGNS

Interior Signage



Our Sign System creates some of the most functional and visually stunning Directory Signs available.

CEILING SUSPENDED SIGNS

Interior Signage



Direct foot-traffic smoothly with unobstructed overhang wayfinding signs in commercial spaces.

PROJECTION MOUNT SIGNS

Interior Signage



Provide facility navigation or room identification with our Projection Mount Signs. These signs really stick out in a crowd.

ELEVATOR SIGNAGE

Interior Signage



Our aesthetically pleasing elevator signage is ideal for discovering floor information.

WORKSTATION SIGNAGE

Interior Signage



Prominently identify employee names, titles, and workspaces with these versatile interior signage selections.

ROOM I.D. SIGNAGE

Interior Signage



Fabricate premium custom room identification signs with gravotac (tactile) text, pictogram, and brailleing.

STAIRWELL SIGNAGE

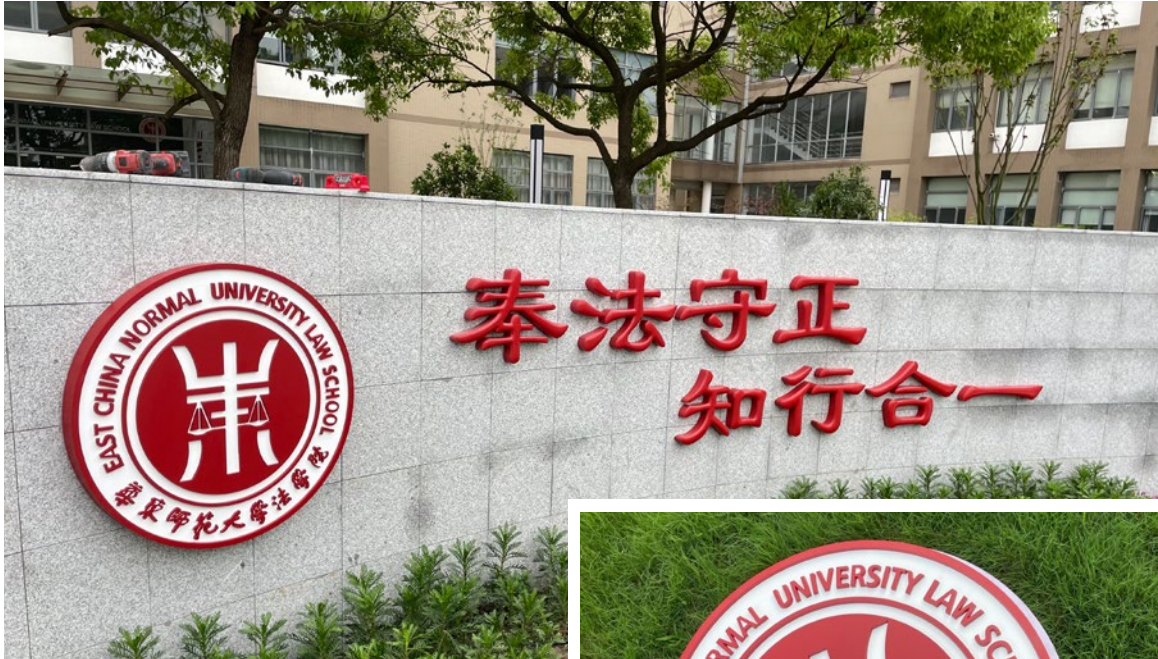
Interior Signage



Create residential or commercial staircase signs that comply with industry standards.

Wayfinding Signage

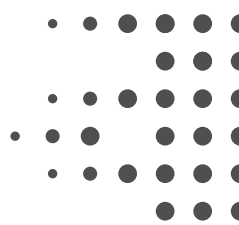




Showcase

School Signage



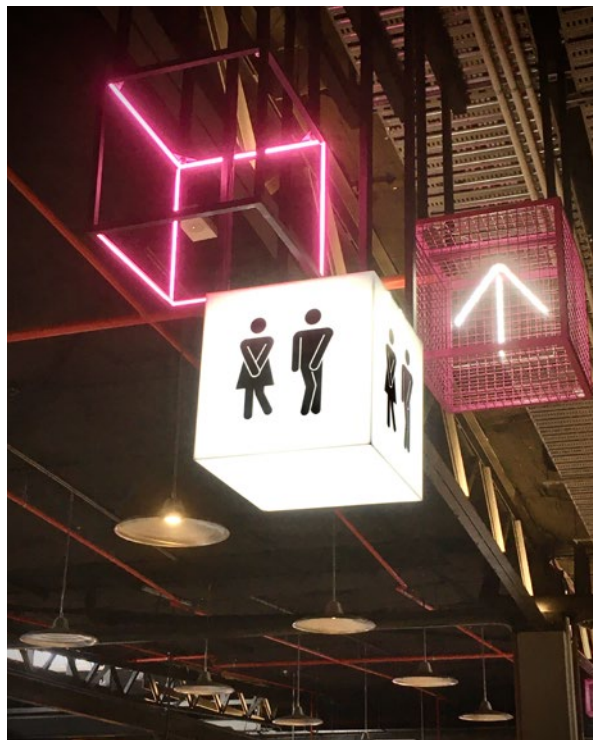


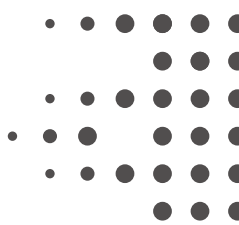
The Mall Signage



Showcase

The Mall Signage





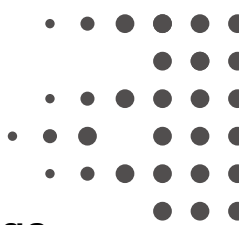
Office Internal Signage |



Showcase

Office Internal Signage





Hospital Clinics Signage



Showcase

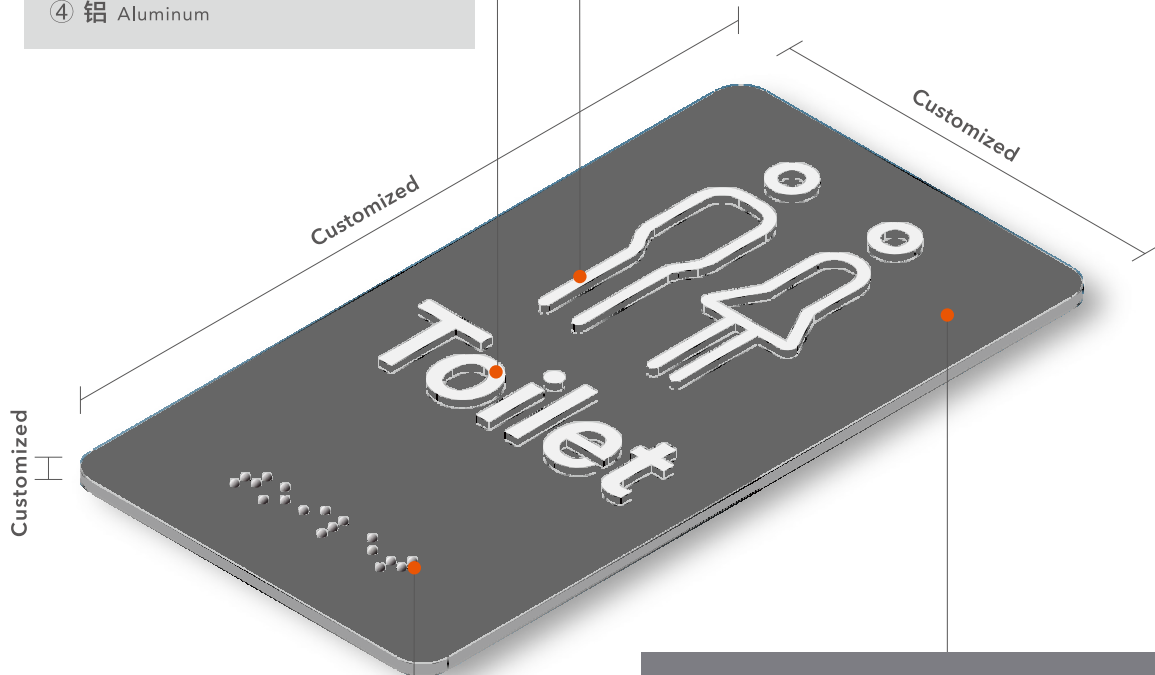
Hospital Clinics Signage



Braille Sign

Text & Icons Material Options:

- ① 亚克力 Acrylic
- ② 不锈钢 Stainless Steel
- ③ 黄铜 Brass
- ④ 铝 Aluminum



盲文珠的选择： Braille Beads Options:

- ① 不锈钢珠 Stainless Steel Brailles Beads
- ② 铜珠 Brass Brailles Beads
- ③ 透明亚克力珠 Clear Acrylic Brailles Beads
- ④ 白色亚克力珠 White Acrylic Brailles Beads
- ⑤ 黑色亚克力珠 Black Acrylic Brailles Beads

背板材料选择： Background Panel Material Options:

- ① 不锈钢 Stainless steel
- ② 黄铜 Brass
- ③ 铝 Aluminium
- ④ 双色板 ABS Double Colour

表面处理选择： Finish Options:

- ① 喷漆 Paint
- ② 拉丝 Brushed
- ③ 镜面 Mirror
- ④ 阳极氧化 Anodized

注意：标牌的颜色不能过于刺眼并且需要形成对比

Note : Signs should have a non-glare finish and well contrasted colors.

Braille Signs And Regulations

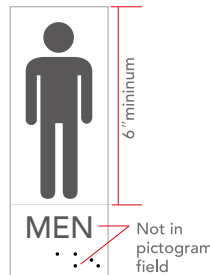
视觉 Visuals

ADA signs can feature logos, company colors and graphics to support your branding or complement your decor.

Signs should have a non-glare finish and well-contrasted colors.



Pictograms can be presented on a 6-inch-high field with no characters or braille sharing that field.



盲文 Braille

Braille is required for any signs that identify a room,

Braille dots should be dome-shaped, not flat



Braille should be located at least 3/8 inch (9.5 mm) below the corresponding text and above any borders or decorative elements.

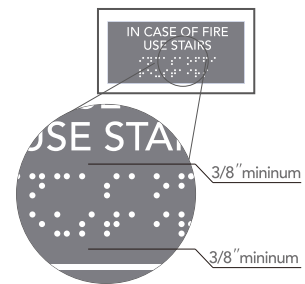
字体和文字 Fonts and characters

Resist the urge to use serif fonts - an important part of ADA sign making is the use of compliant fonts and characters.

Characters can be upper or lowercase, but never italic, cursive, decorative or overly bold.



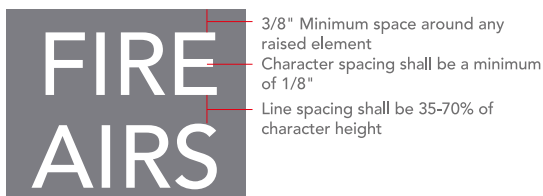
ADA signs must use a sans-serif font.



间隔和测量 Spacing and measurements

ADA guidelines dictate a series of spacing and measuring rules to ensure that signs are consistent and clear.

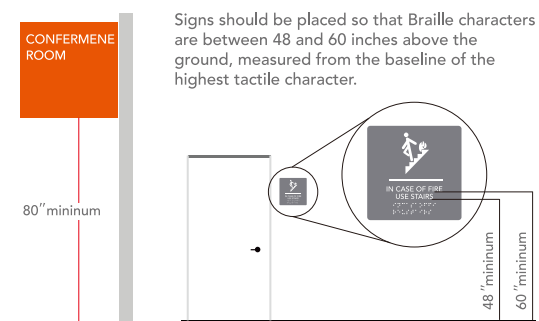
Characters should be placed at least 1/8 inch apart but no more than 4 character strokes apart..



位置 Placement

It's vital that ADA signs are well-placed for optimum visibility and accessibility.

Ceiling or wall projection signs should measure at least 80 inches from the bottom of sign to the floor.





Showcase

Braille Sign



Embossed Plaques

浮雕底板 BASE



EB1



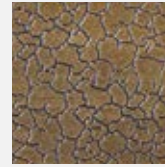
EB2



EB3



EB4



EB5



EB6

浮雕边框 BORDER



EE1



EE2



EE3



EE4



EE5

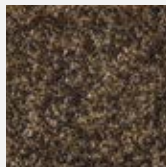


EE6

表面处理 FINISH



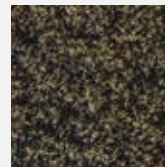
EF1



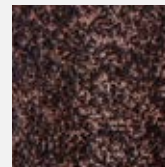
EF2



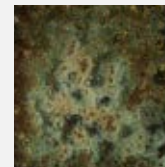
EF3



EF4



EF5



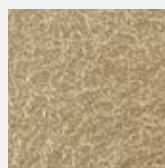
EF6



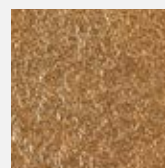
EF7



EF8



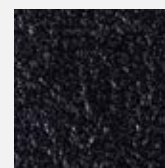
EF9



EF10



EF11

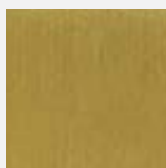


EF12

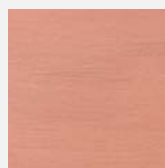
雕刻材料 MATERIAL



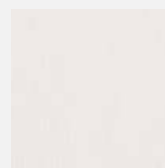
Aluminium Alloy



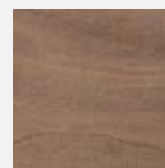
Brass



Copper



Jade Stone



Walnut



Beech

Case analysis



Bronze oxidized,
CNC engraving.



Bronze with antique
finish, CNC engraving.



Stainless steel border
with marble plaque,
screen print, some
letters is relief.



Walnut with copper
aluminum magnesium
alloy, with CNC
engraving pattern.



Aluminum-magnesium
alloy/brass, CNC
engraving/brass
pattern/antique finish.



10mm aluminum-
magnesium alloy with
CNC engraving
Antique finish.



Solid brass with aged
finish, Mounting with
double side adhesive
tape.



Satin bronze raised
areas, bronze
background,
Matte texture and
concealed mounting.

Embossed Plaques



Embossed Plaques |

