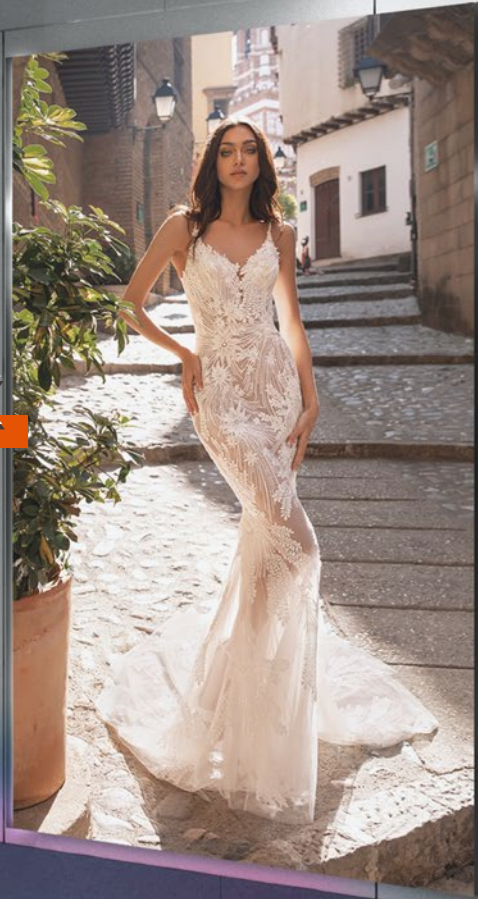


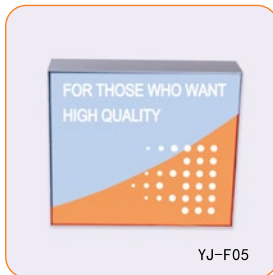
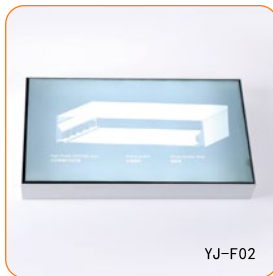
Profile Light Box

- LUMINOUS LIGHT BOX
- PERFECT VISION



The Profile light box product, offers a minimalist, elegant frame to highlight your graphics. Its snap frame design allows for easy and quick graphic change, opening from all four sides. The light box is equipped with bright LED lights that uniformly enlighten your visual to catch your customers' attention.

Category





Features

01 Easy installation, suitable for multiple installation methods such as embedded and hanging.



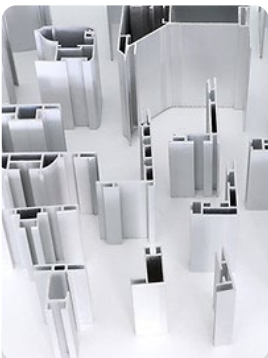
02 Safe and energy saving, low voltage LED light source.

03 Low heating temperature, 90% of electric energy is converted into light energy.

04 Eye protection, no stroboscopic, long-term use will not cause eye fatigue, and has high color rendering.

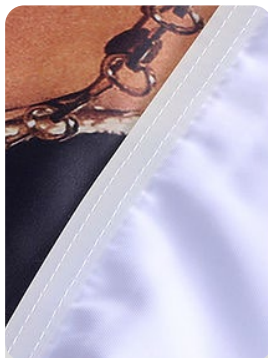
05 New fashion: natural and soft lighting, warm and gorgeous, suitable for any fashion area.

Materials



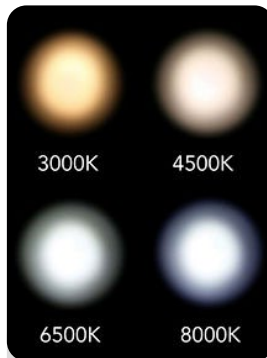
Light Box Profile

High-Quality Aluminum Alloy Frame/Not Easy To Deform/Antioxidant



High Precision UV Printing

The smooth finish and luxury look of fabric brings images to life



LED Light Source

Ultra-bright LED lighting, Low power consumption

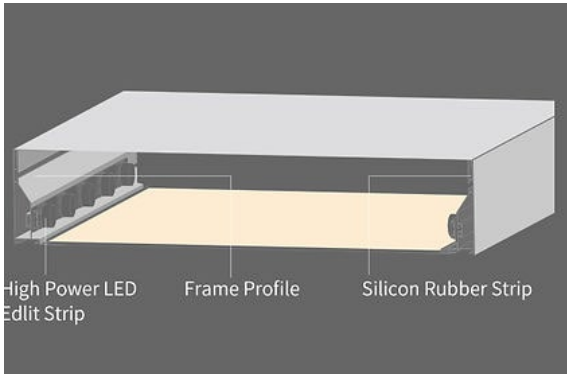


Color Temperature

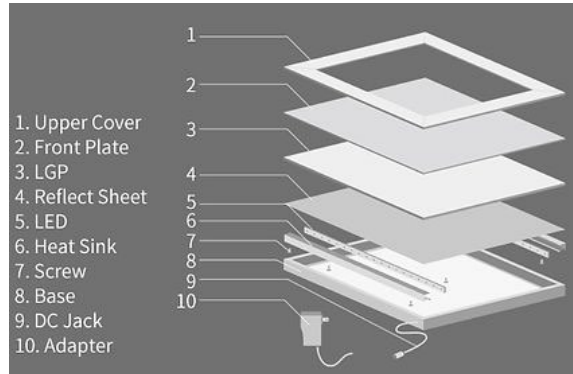
Options
3000K-8000K



Structures

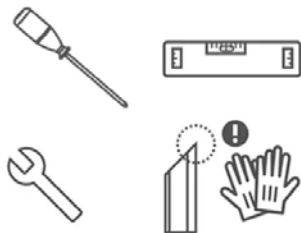


Quality frameless systems available in different depths and finished, they are lightweight and easy to assemble.

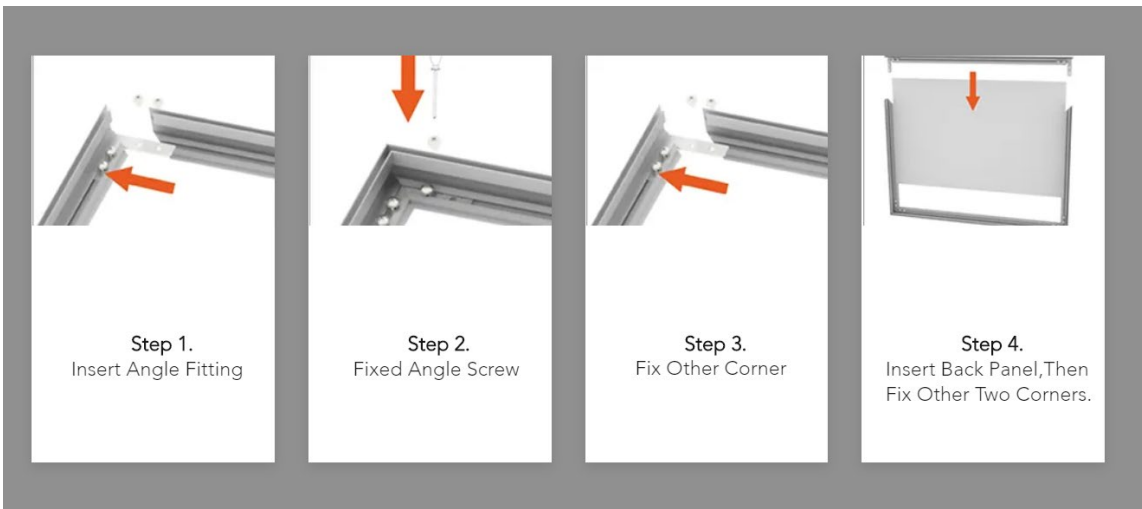


Snap frame light box is made of ultra-thin light guide panel covered by an aluminum frame.

Easy Assembly

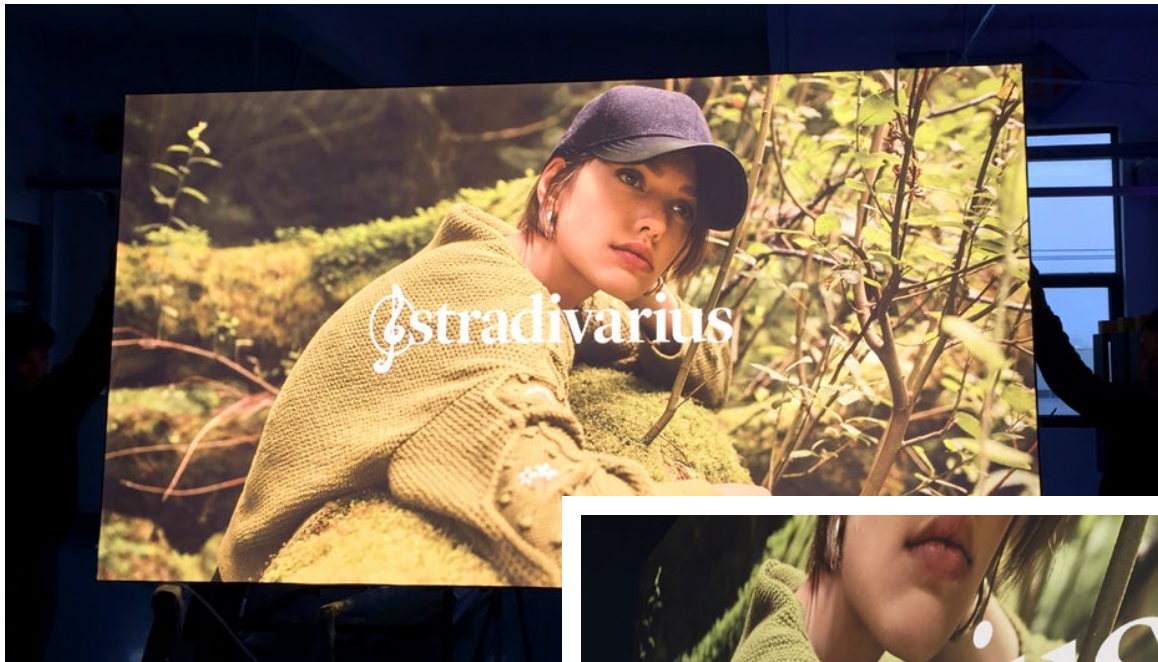


Light Box assembly is quick and easy. The corners are assembled using simple connector brackets and an allen wrench which are included in the packaging. Instructions and support are provided if there are any questions during assembly.





Fabric Light Box



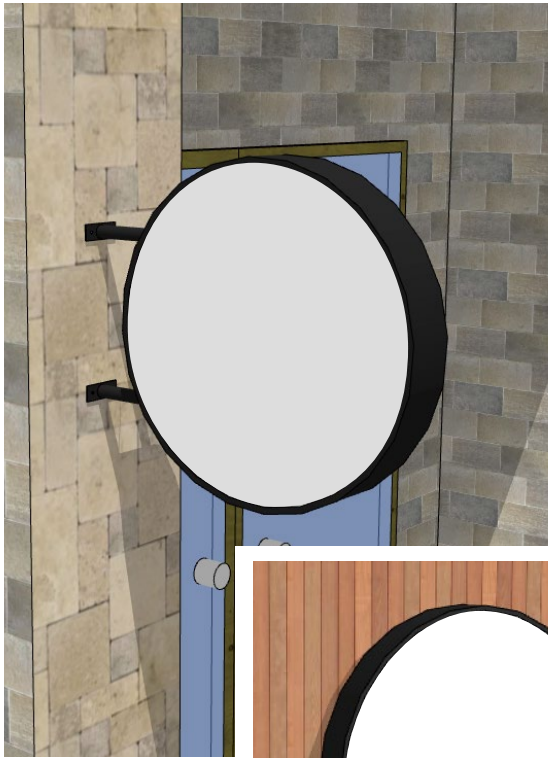
Showcase

Fabric Light Box

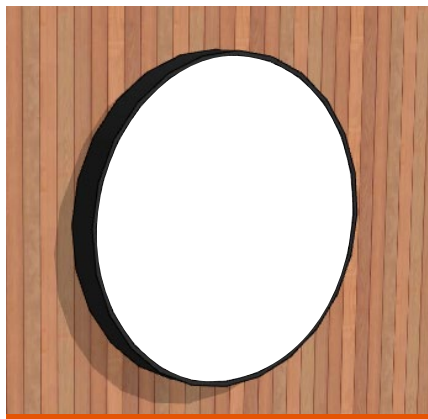
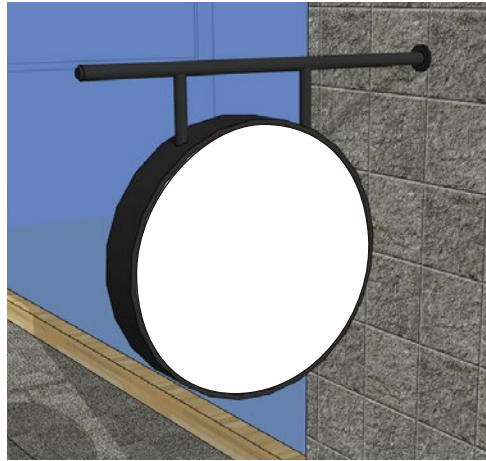




Round Light Box



YJ-L01



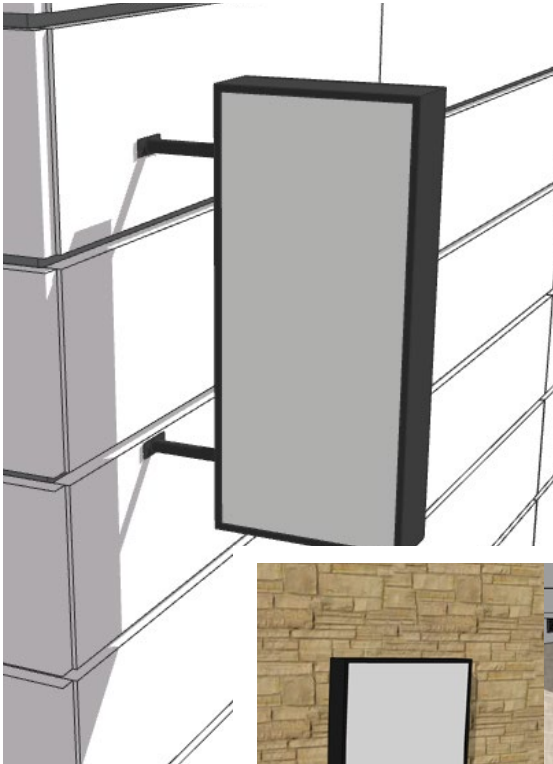
Indoor + Outdoor

Showcase

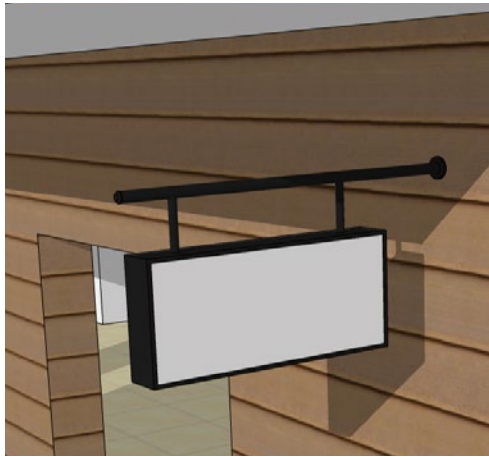




Rectangle Light Box



YJ-L02

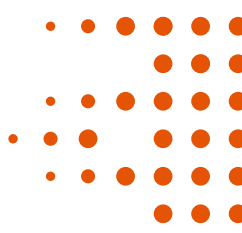


Indoor + Outdoor

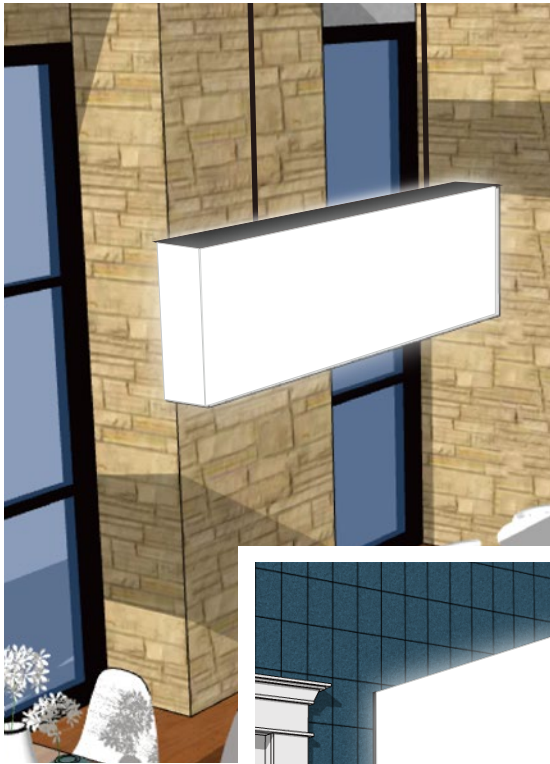


Showcase

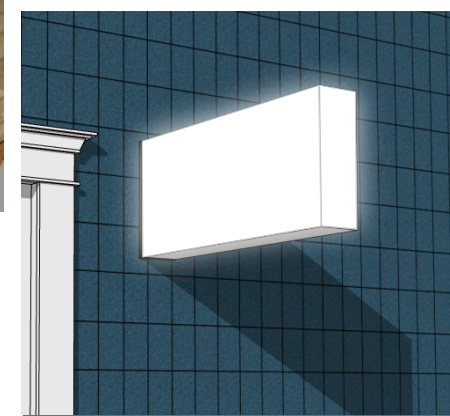
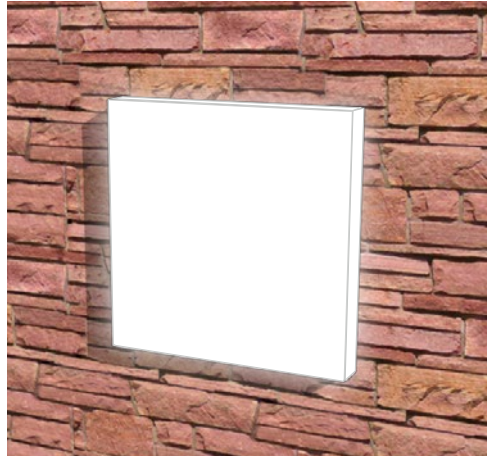




Full Illuminated Light Box

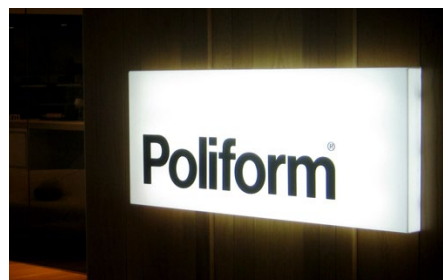


YJ-L03



Indoor + Outdoor

Showcase





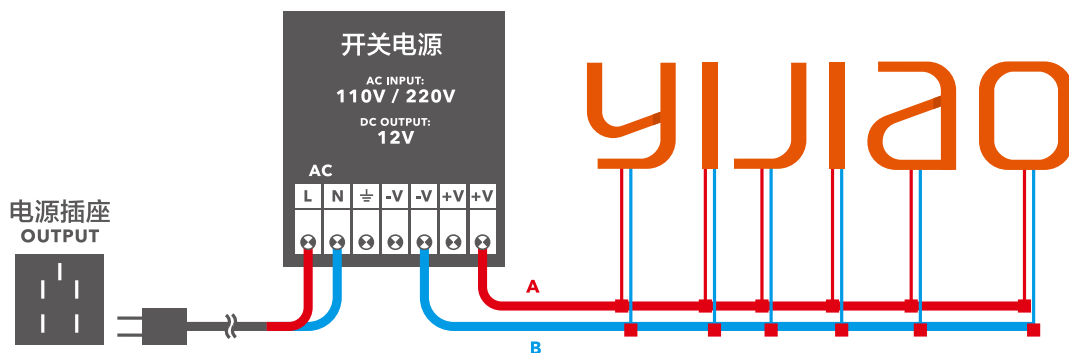
INSTRUCTION

FOR INSTALLATION

-Power Supply Connecting And Tips

安装说明 - 开关电源连接方式及注意事项

1. 按照下图所示连接导线，根据实际情况决定主线的长度，主线的平方数请查询下表中对应数值。
 2. 电线与电线之间连接请使用正规的接线端子，接头处使用绝缘胶带包裹。
 3. 所有电线在条件允许的情况下应隐藏起来。
 4. 为了LED的最佳使用寿命，建议每24小时至少关闭15分钟。
 5. 为了达到充分散热，一般开关电源宜安装在空气对流条件较好的位置，对于普通变压器应注意防水。
 6. 开关电源应接在发光字之间，而不是两头。
1. Connecting the wires as above presentation, deciding the main wire length as reality. Please check the main wire square number as following table.
 2. Connections between the wires with standard terminals, dealing the layup with insulated adhesive tape.
 3. Under the conditions permitted, all the wires should be hidden.
 4. Led should be switched off for 15 minutes at least in 24 hours, in order to maximize the use of it.
 5. General power supply should be placed in a ventilated location for heat dissipation. The general transformer should be protected from water.
 6. Power supply should be connected between the luminous letters instead of the both ends.



Packaging

